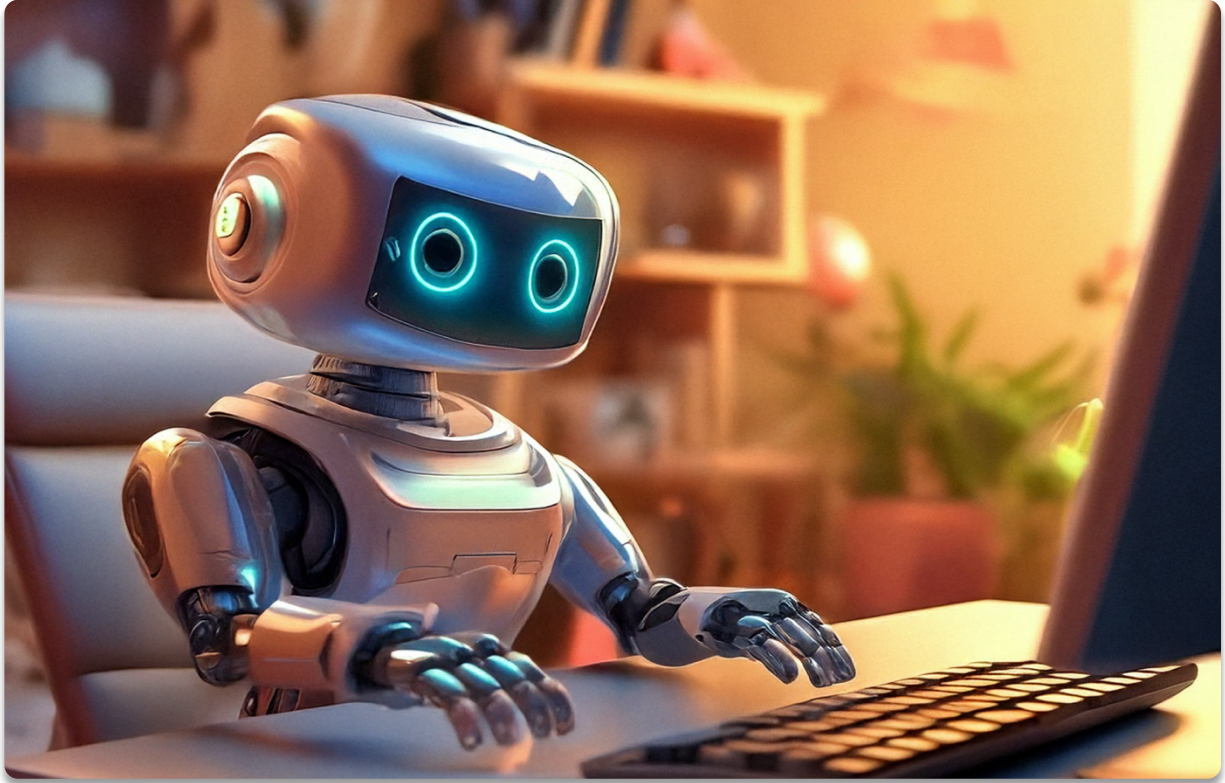


The Utilization of AI in MS Word

An In-depth Look at AI Integration



Introduction

Artificial Intelligence (AI) has revolutionized various aspects of technology, and MS Word is no exception. In this document, we will explore the different ways AI is integrated into MS Word and how it enhances user experience.

The Evolution of AI in MS Word

MS Word has continuously evolved, incorporating cutting-edge AI technologies to improve its functionality and usability. From grammar checks to predictive text, AI is at the forefront of these advancements.

Early Implementations

AI usage in MS Word began with basic grammar and spell-check functionalities. These features have significantly evolved over the years.

Grammar and Spell Check

The initial AI-driven grammar and spell check tools provided users with essential writing support, offering corrections and suggestions.

Advanced AI Features

Modern AI capabilities in MS Word go far beyond simple corrections, offering sophisticated tools to assist with writing and formatting.

Predictive Text

Predictive text technology suggests words and phrases as users type, speeding up the writing process and enhancing productivity.

Smart Suggestions

By analyzing the context of the text, AI provides intelligent suggestions that are relevant and contextually appropriate.

Practical Applications

Below are some practical applications of AI in MS Word:

1. Grammar correction
2. Spell check
3. Predictive text
4. Formatting assistance

Real-World Example

Consider the following example where AI assists in formatting a document:

Conclusion

The integration of AI in MS Word significantly enhances user experience by offering advanced tools and features that aid in writing and formatting. As AI continues to evolve, we can expect even more innovative solutions in the future.

Future Prospects

The future of AI in MS Word looks promising, with potential advancements in real-time language translation, deeper contextual understanding, and personalized writing assistance.

Summary

AI has transformed MS Word into a powerful tool for writers, providing advanced functionalities that streamline the writing process and improve document quality.

Placeholder Text